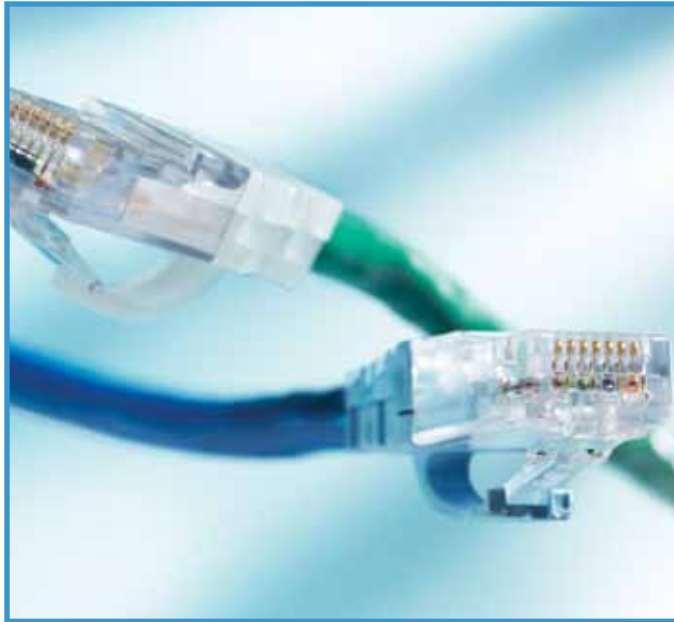


▶ COPPER CONNECTIVITY

Copper Cords



Clarity 6A/10G, Clarity 6 and Clarity 5E patch cords lead the impressive family of Ortronics® cable assemblies. Patch cords are now recognized as the most critical element of any high performance cabling system. Legrand | Ortronics developed and is continuously improving Paralign™ modular plug technology to ensure that Clarity® cords offer unsurpassed installed performance. The Clarity patch cord offering is complemented by an extensive line of voice/data grade cords and 25-pair cable assemblies—all built with the same attention to quality and performance.

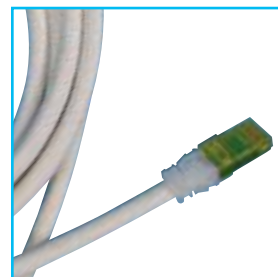
▶ Clarity
▶ Patch Cords

▶ Clarity Shielded
▶ Patch Cords

▶ Clarity 110
▶ Patch Cords

▶ Custom
▶ Assemblies

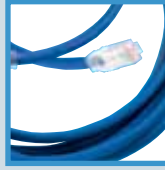
FEATURED PRODUCTS



Clarity
6A/10G
Patch Cords
P.66



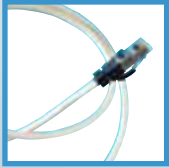
P.66
Clarity 6A/10G
Patch Cords



P.66
Clarity 6 and 5E
Modular Patch
Cords



P.67
Clarity VoIP
Patch Cords



P.67
Shielded Clarity
Modular Patch
Cords



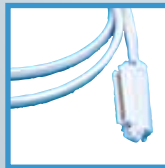
P.68
Clarity UTP
110/110
Patch Cords



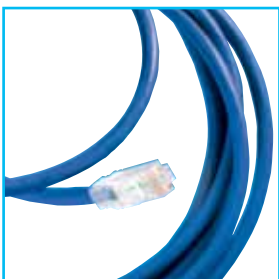
P.68
Clarity UTP
110/Modular
8-Position
Patch Cords



P.69
Category 5E
25-Pair Cable
Assemblies



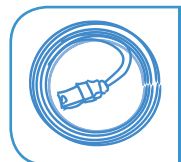
P.69
25-Pair Cable
Assemblies



Clarity 6
Modular
Patch Cords
P.66



Clarity
VoIP
Patch Cords
P.67



CLARITY® PATCH CORDS

Clarity UTP Patch Cords

Clarity® patch cords utilize center tuned technology to elevate channel performance. Clarity 6A, 6 and 5E cords are ETL verified to Category 6 and 5e component standards. More importantly, center tuning these cords to Clarity jacks and panels provides significant elevation of channel performance that can be field measured.

- Center tuned to Clarity jacks and panels for a more transparent mated union
- Improved Paralign™ 2 plug termination better controls plug performance
- Assembled with premium cordage, and 100% factory tested for performance, reliability, and long life
- Narrow Paralign plug profile supports use in high density panels and hubs
- Clarity 6 and Clarity 5E patch cords are ETL verified to TIA-568C.2 component specifications to ensure component compliance to project specifications
- Icon compatible—provides additional TIA-606-A designation capabilities

OR-MC61009-09



Clarity 6A/10G Patch Cords

Clarity 6A/10G patch cords combine Category 6A performance with the flexibility of stranded conductor cordage for increased flexibility and ease of cable management. MC610 patch cord assemblies combine with Clarity 6A jacks and panels to deliver reliable 10 Gig channel performance. Meets TIA 568C.2 category 6A component specifications.

PART NO.	DESCRIPTION
OR-MC61003-09	Modular cord, white, 3 ft.
OR-MC61005-09	Modular cord, white, 5 ft.
OR-MC61007-09	Modular cord, white, 7 ft.
OR-MC61009-09	Modular cord, white, 9 ft.
OR-MC61015-09	Modular cord, white, 15 ft.
OR-MC61020-09	Modular cord, white, 20 ft.
OR-MC61025-09	Modular cord, white, 25 ft.

NOTE: To order other standard colors change suffix on MC cords: -02=red, -03=orange, -04=yellow, -05=green, -06=blue, -08=gray, -09=white.

OR-MC607-06



Clarity Modular Patch Cords

Clarity 6 and Clarity 5E modular patch cords are ETL verified to Category 6 and 5e component standards, while providing elevated field-measurable channel performance.

CLARITY 6 CATEGORY 6 UTP PART NO.	CLARITY 5E CATEGORY 5e UTP PART NO.	DESCRIPTION
OR-MC603-06	OR-MC5E03-06	Four-pair 24 AWG stranded UTP, blue, PVC, length 3'
OR-MC605-06	OR-MC5E05-06	Four-pair 24 AWG stranded UTP, blue, PVC, length 5'
OR-MC607-06	OR-MC5E07-06	Four-pair 24 AWG stranded UTP, blue, PVC, length 7'
OR-MC609-06	OR-MC5E09-06	Four-pair 24 AWG stranded UTP, blue, PVC, length 9'
OR-MC615-06	OR-MC5E15-06	Four-pair 24 AWG stranded UTP, blue, PVC, length 15'
OR-MC620-06	OR-MC5E20-06	Four-pair 24 AWG stranded UTP, blue, PVC, length 20'
OR-MC625-06	OR-MC5E25-06	Four-pair 24 AWG stranded UTP, blue, PVC, length 25'

NOTE: To order other standard colors change suffix on MC cords: -02 = red, -04 = yellow, -05 = green, -06 = blue, -08 = gray, -09 = white, -00=black.

OR-SC6P07SB-06



Clarity 6 and Clarity 5E Solid Conductor Modular Cable Assemblies

Combining Paralign 2 plug termination with a specially designed Category 6 or Category 5e horizontal cable, these Clarity 5E and Clarity 6 performance grade assemblies serve applications where a punched down termination is required for one end while the other provides an eight-position plug. Typical applications include modular consolidation points or panel-to-panel cross connects.

PART NO. FORMULA	(XX) length in feet	(X) D= double-ended modular 8 pos. plug	(X) A=T568A wired B=T568B wired	(XX) -06 = blue
OR-SC(X) 6R=Category 6 PVC 6P=Category 6 plenum 5ER=Category 5e PVC 5EP=Category 5e plenum	Example 10=10ft	S= single-ended modular 8 pos. plug		

NOTE: To order other standard colors for PVC cables change suffix on MC cords: -02=red, -03=orange, -04=yellow, -05=green, -06=blue, -08=gray, -09=white. Contact sales for other Plenum cable colors

CLARITY® PATCH CORDS

Clarity VoIP Patch Cords

OR-VC607-09



Clarity VoIP Patch Cords

Ortronics® VoIP patch cords provide an extra low-profile Clarity plug at one end to address cable bend requirements when plugging into the bottom of an IP phone set. The other cord end offers the full protective attributes of the Paralign 2 plug.

CLARITY 6 UTP PART NO.	DESCRIPTION
OR-VC603-09	Four-pair 24 AWG Category 6 stranded UTP, white, PVC, length 3'
OR-VC605-09	Four-pair 24 AWG Category 6 stranded UTP, white, PVC, length 5'
OR-VC607-09	Four-pair 24 AWG Category 6 stranded UTP, white, PVC, length 7'
OR-VC609-09	Four-pair 24 AWG Category 6 stranded UTP, white, PVC, length 9'
OR-VC615-09	Four-pair 24 AWG Category 6 stranded UTP, white, PVC, length 15'

NOTE: To order other standard colors change suffix on MC cords: -02=red, -03=orange, -04=yellow, -05=green, -06=blue, -08=gray, -09=white.

CLARITY PATCH CORDS

Shielded Category 6A, 6 and 5e

OR-MCS603-08



Shielded Clarity Modular Patch Cords

A shielded version of the Paralign 2 plug termination makes these Clarity shielded patch cords the high performance choice for an STP or FTP 100 ohm cabling system.

SHIELDED CLARITY 6A PART NO.	SHIELDED CLARITY 6 PART NO.	SHIELDED CLARITY 5E PART NO.	DESCRIPTION
OR-MCS6A03-08	OR-MCS603-08	OR-MCS5E03-08	Four-pair 24 AWG stranded FTP, gray, PVC, length 3'
OR-MCS6A05-08	OR-MCS605-08	OR-MCS5E05-08	Four-pair 24 AWG stranded FTP, gray, PVC, length 5'
OR-MCS6A07-08	OR-MCS607-08	OR-MCS5E07-08	Four-pair 24 AWG stranded FTP, gray, PVC, length 7'
OR-MCS6A09-08	OR-MCS609-08	OR-MCS5E09-08	Four-pair 24 AWG stranded FTP, gray, PVC, length 9'
OR-MCS6A15-08	OR-MCS615-08	OR-MCS5E15-08	Four-pair 24 AWG stranded FTP, gray, PVC, length 15'
OR-MCS6A25-08	OR-MCS625-08	OR-MCS5E25-08	Four-pair 24 AWG stranded FTP, gray, PVC, length 25'

NOTE: Clarity 6 is also available in -02 red and -04 yellow.

CLARITY® 110 PATCH CORDS

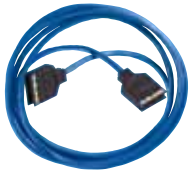


Clarity 110 patch cords are ETL verified to TIA-568-B Category 6 and 5e component standards. More importantly, Clarity 110 plugs utilize an internal signal feedback technique to control cross talk without compromising impedance. Clarity 110 to modular 8-position patch cords utilize both signal feedback and center tuning. This allows more transparent connector interfaces for significant elevation of channel performance that can be field measured.

- Verified to TIA component specifications to ensure component performance
- Internal signal feedback of the 110 plug design controls noise contributors
- Center tuned Paralign™ 2 modular plug design controls the plug for a transparent mated union
- Assembled with premium cordage for performance, reliability, and long life
- Factory tested for performance to ensure consistent reliability

Clarity UTP 110/110 Patch Cords

OR-110C607-06



CLARITY 6 UTP PART NO.	CLARITY 5E UTP PART NO.	DESCRIPTION
OR-110C603-06	OR-110C5E03-06	110/110 four-pair patch cord, blue, length 3'
OR-110C605-06	OR-110C5E05-06	110/110 four-pair patch cord, blue, length 5'
OR-110C607-06	OR-110C5E07-06	110/110 four-pair patch cord, blue, length 7'
OR-110C609-06	OR-110C5E09-06	110/110 four-pair patch cord, blue, length 9'
OR-110C615-06	OR-110C5E15-06	110/110 four-pair patch cord, blue, length 15'

NOTE: To order other standard colors, change suffix: -06 = blue, -05 = green, -09 = white.

Clarity UTP 110/Modular 8-Position Patch Cords

OR-MC18B603-06



CLARITY 6 UTP PART NO.	CLARITY 5E UTP PART NO.	DESCRIPTION
OR-MC18B603-06	OR-MC18B5E03-06	110 four-pair patch cord, T568B, blue, length 3'
OR-MC18B605-06	OR-MC18B5E05-06	110 four-pair patch cord, T568B, blue, length 5'
OR-MC18B607-06	OR-MC18B5E07-06	110 four-pair patch cord, T568B, blue, length 7'
OR-MC18B609-06	OR-MC18B5E09-06	110 four-pair patch cord, T568B, blue, length 9'
OR-MC18B615-06	OR-MC18B5E15-06	110 four-pair patch cord, T568B, blue, length 15'

NOTE: To order other standard colors, change suffix: -06 = blue, -05 = green, -09 = white.

CUSTOM ASSEMBLIES

OR-845EPLPL005-1GY



Category 5e 25-Pair Cable Assemblies (stock lengths)

Ortronics® Category 5e 25-pair cable assemblies use premium Category 5e cable and high performance 50-pin connectors to support multi-circuit connections between hubs and panels or between panels.

Terminated Male/Male, 110° Left Exit

PART NO.	DESCRIPTION
OR-845EPLPL005-1GY	Category 5e, 25-pair cable assembly, M/M, gray PVC, length 5'
OR-845EPLPL007-1GY	Category 5e, 25-pair cable assembly, M/M, gray PVC, length 7'
OR-845EPLPL010-1GY	Category 5e, 25-pair cable assembly, M/M, gray PVC, length 10'
OR-845EPLPL025-1GY	Category 5e, 25-pair cable assembly, M/M, gray PVC, length 25'

OR-845PSPS005-1GY



Custom Length Category 5e 25-Pair Cable Assemblies

Part No. Formula

OR-XXXX	XXXX	XXX	-X or -XXX
ASSEMBLY TYPE	TYPE OF CABLE ENDS	LENGTH IN FEET	TYPE OF CABLE
OR-845E (Category 5e)	PL, PR, PS, XX	5, 10, 15, 25	4 or 1GY

Example: OR-845EPRPS025-4
 Type of Cable Ends: PL = Male 110° left exit PR = Male 110° right exit
 PS = Male 180° XX = Blunt, not terminated
 Type of Cable: 1GY = 24 AWG Gray PVC 4 = 24 AWG Plenum

OR-801025PC005-1GY



25-Pair Cable Assemblies

Ortronics voice/data/LAN 25-pair cable assemblies are constructed from 24 AWG solid conductor UTP cables terminated with industry standard 50-pin telco connectors.

Part No. Formula

OR-XXX	XX	XXX	-X or -XXX
ASSEMBLY TYPE	TYPE OF CABLE ENDS	LENGTH IN FEET	TYPE OF CABLE
OR-804025 (Voice)	P, C, X	5, 10, 15, 25	1GY or 4
OR-801025 (Cat 3)	P, C, X	5, 10, 15, 25	1GY or 4

Examples: OR-804025PC015-1GY, OR-801025PC010-1GY
 Type of Cable Ends: P = Male 90° C = Female 90° X = Blunt, not terminated
 Type of Cable: 1GY = 24 AWG Gray PVC 4 = 24 AWG Plenum

NOTE: Consult sales for other custom requirements and for lead times and minimum orders.